

Guide to the Setting up 4 or 6 Projectors on a single graphics card.

This guide exists to help you with any issues you might have found while installing and using Easyblend using 4 or 6 projectors off of a single graphics card.

Supported Setups:

- A single graphics card with two triple heads2go or two dual heads2go on Windows XP
The software may work in other configurations, but we only support the above and we strongly recommend you use the above configurations.

Setup

Plug in the 4 or 6 projectors into the matrox tripleheads2go or dualheads2go. If you are using tripleheads2go with two projectors plug the projectors into the two extreme connectors e.g. the ones marked 1 and 3 on each triplehead2go.

These in turn should be connected to the motherboard through usb and a DVI cable going back to a single graphics card.

In the case of Nvidia what one needs to do is right click on the desktop to see the display properties and make sure that both triple heads are attached and working. You might have to reboot the system to see that. You may also have to select the 2nd monitor as attached to see this.

In order to use ScalablePlayer you need to put the system into vertical or horizontal span mode, Depending if you are doing 2x2 or 2x3 or 3x2 – whichever one makes sense for your situation based on the orientation of the projectors:

- Right click on the desktop and select Nvidia control panel. As shown in Figure 1. Click on Change Resolution to make sure you are seeing two monitors. If not ... still follow the below
- Select Setup Multiple Displays as shown in Figure2. If you only see one option e.g. a single display you will need to make sure everything is plugged in e.g. the usb, the dvi connector to the graphics card etc. Sometime you may have to reboot.
- Once you see the 4 or 5 options that let you set horizontal span mode select them and the monitors will switch to that mode. Once that is done make sure you select okay for that.
- If you find the switching difficult using the projectors you can also just set up vnc and do the setting up remotely in which case you will have the time necessary to okay actions without the system reverting back.
- If the resolution is not right revert to the customer resolutions of Figure1 and in one fo the displays it will let you select the right resolutions.
- If the resolution you want is not avaialbe you may have to set them using the matrox GXM setup utility that can be clicked on in the lower right part of the bottom taskbar.
 - (note also that sometimes if the system stops doing certain resolutions (like letting you use 3 projectors etc)) you can reset the card and the output options by selecting manufacturers reset that is in troubleshooting menu of the GXM Setup utility

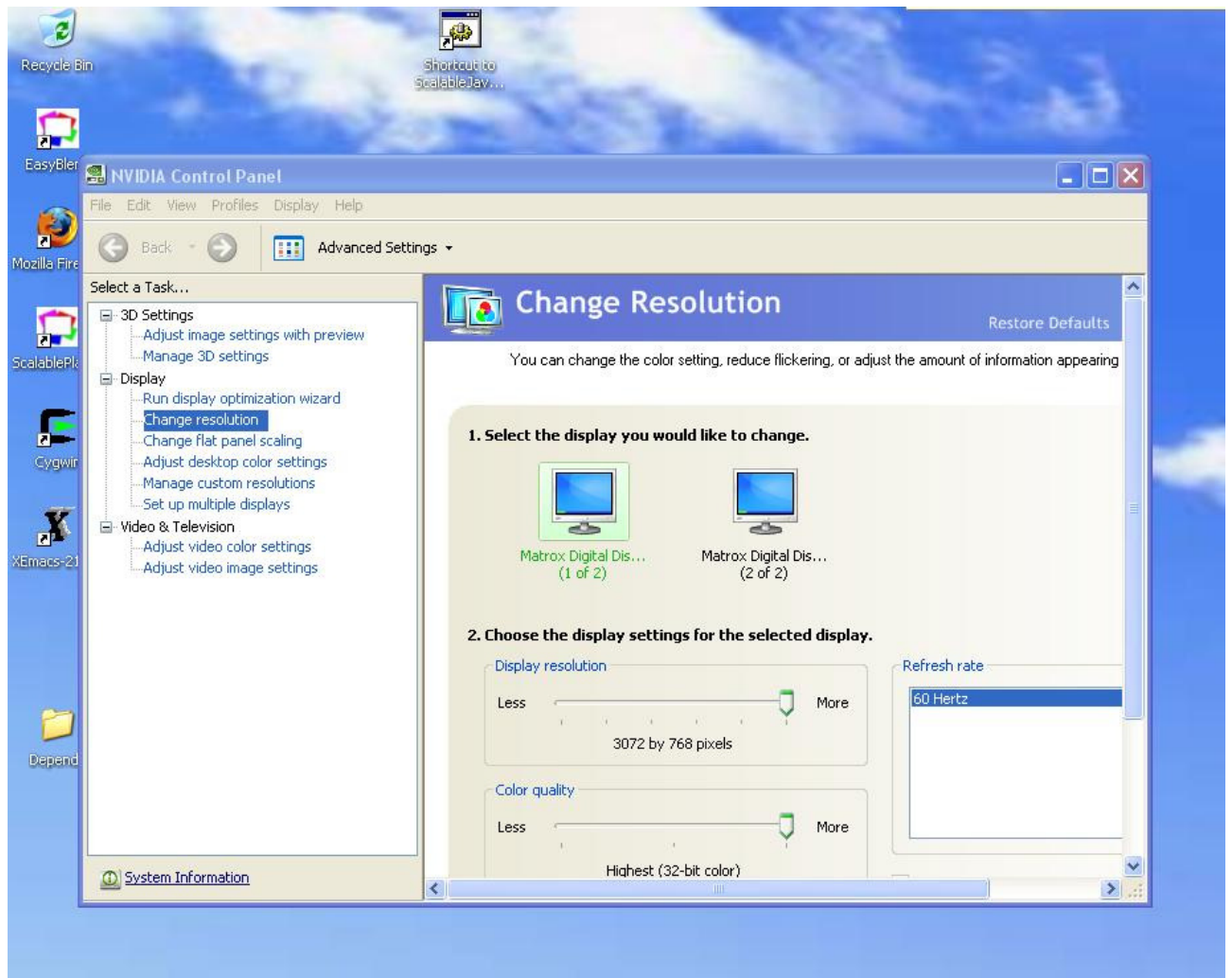


Figure 1

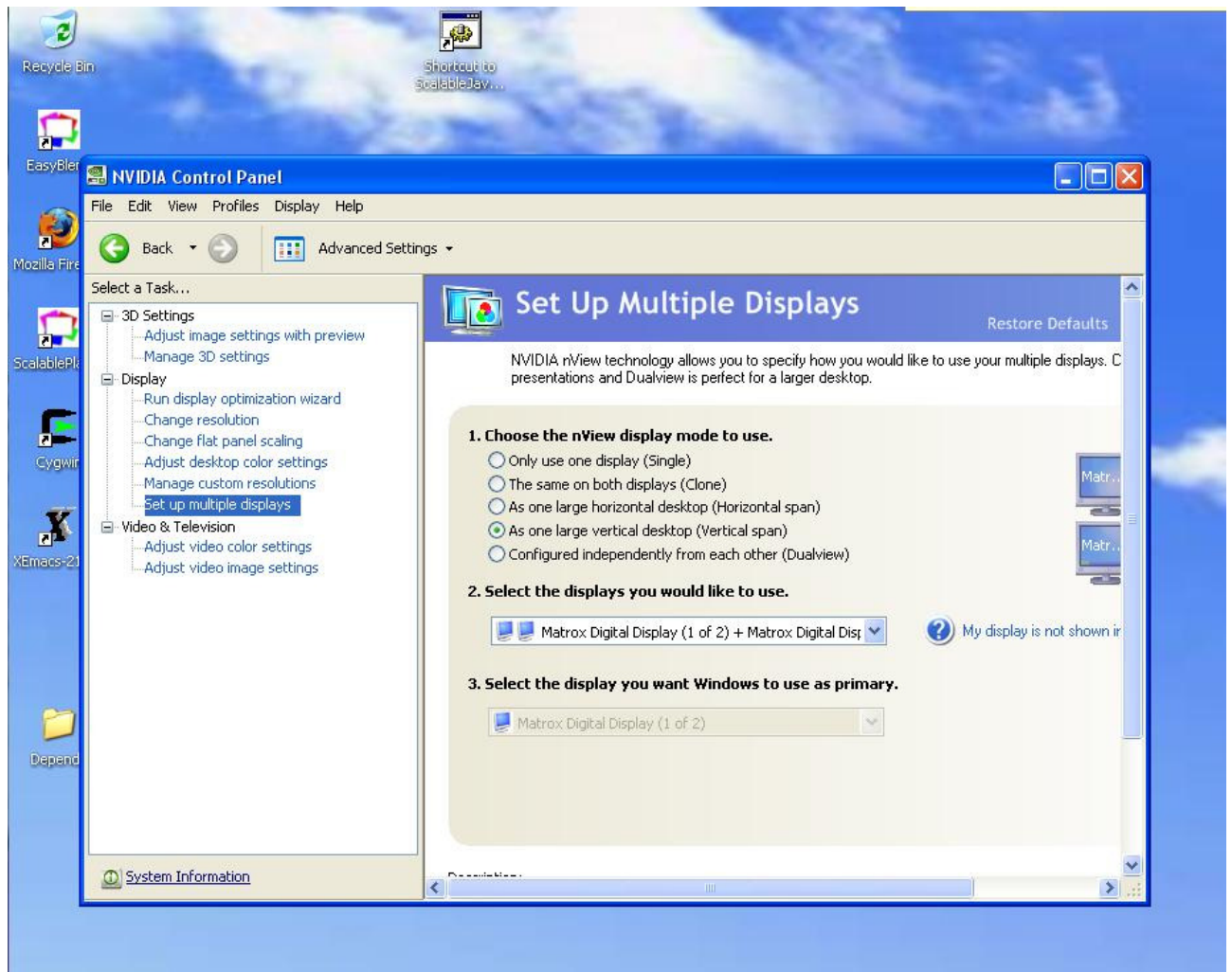


Figure 2